

| shower panels |



new
PRODUCTS
2024

WATERPROOF WALLS & FLOORS

2024



| waterproof slatwall |



| spc vinyl flooring |

slatwall
•
shower panels
•
spc vinyl flooring



new
**STYLES
ADDED FOR
2024**



Contents

INTRODUCTION	4
▪ Key Features	6
WATERPROOF SLATWALL	8
▪ Introduction	10
▪ Product Range	12
M1 SERIES SHOWER WALL PANELS	14
▪ Introduction	16
▪ Product Range	18
SPC VINYL FLOORING	22
▪ Introduction	24
▪ Product Range	26



Silver Metallic Retro Panel

Slatwall Panel
Oak & Black

SPC Vinyl Floor
Dark Grey Slate



White Marble
Panel

| waterproof slatwall |



| shower panels |



| spc vinyl flooring |





SLATWALL KEY FEATURES:

- Oak and walnut wood effect
- 100% waterproof
- End trims available for a perfect finish
- Stylish & practical
- Quick & easy install
- Modular tongue and groove design
- Install with hybrid grab adhesive
- Suitable for residential and commercial use
- Made from recyclable materials



M1 SHOWER WALL PANELS KEY FEATURES:

- Quick & easy install
- Much faster than traditional tiling
- No grouting
- Will not bow in wet conditions
- Easy to handle & transport
- 100% waterproof
- No wood used in manufacture
- Hygienic wipe clean surface
- Resistant to mould and mildew
- Excellent insulation & sound proofing
- Class 1 fire rated (BS 476 part 7)
- Stylish & practical
- Cost-effective
- Transform your bathroom in hours rather than days
- Easy to cut using a fine-toothed handsaw



SPC VINYL FLOORS KEY FEATURES:

- Rigid core vinyl
- Ready to install quickly with rapid acclimatisation
- Suitable for installation over underfloor heating up to 27°C
- Vinyl with built-in underlay
- Patented Uniclic® System for easy installation
- 5.0mm thick + 1.0mm IXPE underlay





Waterproof Slatwall



100% WATERPROOF



EASY INSTALL



RECYCLABLE MATERIALS



WOOD-EFFECT

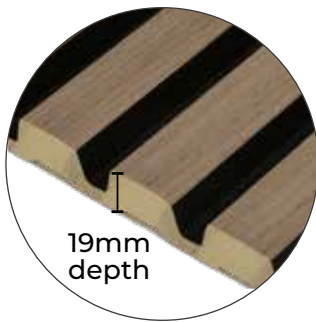
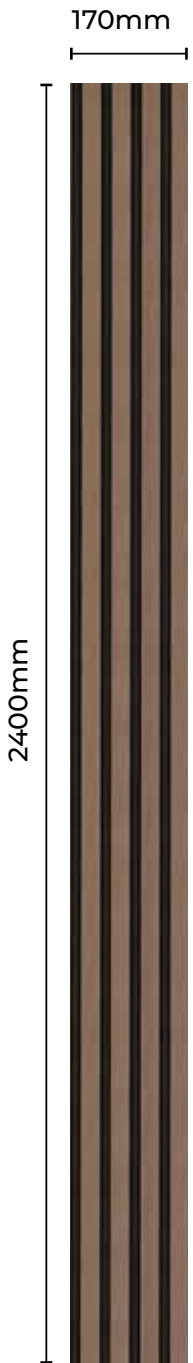


EASY CLEAN



SPECIFICATION AND FEATURES

- Oak wood and walnut effect
- 100% waterproof
- End trims available for a perfect finish
- Suitable for residential and commercial use
- Stylish & practical
- Modular tongue and groove design
- Quick & easy install
- Install with hybrid grab adhesive
- Made from recyclable materials



EASY TO INSTALL

Very simple to install either by bonding with grab adhesive or for ceiling installations we recommend mounting with screws through the panel and into your wall. Cut panels to size across the width using a fine-toothed handsaw.

DIMENSIONS AND TECHNICAL DETAILS

Panel (mm)	W170 x H2400 x D19
Slat (mm)	W27 x D13
Panels per pack	3
Finish	Premium waterproof wood-on-wood effect
Composition	90% recycled polystyrene, 10% virgin materials
Pack size (mm)	W500 x 2400

OAK & BLACK PANEL



AXWP-62-0202

Panel (3 pack)
2400 x 170 x 19mm
1 pack = 1.2m²



AXWP-62-0204

End Cap Grooved
2400 x 24 x 19mm



AXWP-62-0206

End Cap Tongued
2400 x 30 x 19mm

OAK & OAK PANEL



AXWP-60-0202

Panel (3 pack)
2400 x 170 x 19mm
1 pack = 1.2m²



AXWP-60-0204

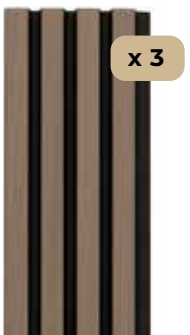
End Cap Grooved
2400 x 24 x 19mm



AXWP-60-0206

End Cap Tongued
2400 x 30 x 19mm

WALNUT & BLACK PANEL



AXWP-54-0202

Panel (3 pack)
2400 x 170 x 19mm
1 pack = 1.2m²



AXWP-54-0204

End Cap Grooved
2400 x 24 x 19mm



AXWP-54-0206

End Cap Tongued
2400 x 30 x 19mm

WALNUT & WALNUT PANEL



AXWP-56-0202

Panel (3 pack)
2400 x 170 x 19mm
1 pack = 1.2m²



AXWP-56-0204

End Cap Grooved
2400 x 24 x 19mm



AXWP-56-0206

End Cap Tongued
2400 x 30 x 19mm

INSTALLATION KIT



AXWP-90-0005

2 x Fix-MD Fixing Adhesive
use 1 fitting kit for 3 panels







M1 Series Shower Wall Panels

new
STYLES
ADDED FOR
2024



100% WATERPROOF



TONGUE & GROOVE



EASY INSTALL



FLAME RETARDANT



EASY CLEAN

ABOUT M1 SERIES PANELS

Interior decorative wall and ceiling panelling system that is easy to fit and simple to maintain. Panels are suitable for all walls and ceilings in showers, bathrooms, kitchens, conservatories, extensions and utility rooms.

DECORATIVE AND STYLISH

The high gloss panels are available in a wide variety of designs and colours from classic marble through to shimmering diamond and rustic oak – something for everyone.

EASY TO FIT

Designed to be ultra easy to fit, the tongue and groove panels simply click together using a small bead of sanitary silicone, creating a smooth watertight finish.

- The perfect alternative to tiling
- Easy to fit system, no specialist training needed
- No drying time or grouting – get the job done in one day
- Fix over existing surfaces including tiles
- Range of trims to give a professional finish
- Easy to handle and transport
- Simple to fit tongue and groove panels

EASY TO MAINTAIN

The ultimate “fit and forget” home improvement product.

- 100% waterproof honeycomb core
- No wood
- Hygienic, wipe-clean surface
- Mould resistant
- No grouting to discolour
- Excellent insulation and sound proofing

WHY M1 SERIES PANELS?

- ✓ **QUICK & EASY INSTALL**
much faster than traditional tiling
- ✓ **NO GROUTING**
- ✓ **WILL NOT BOW IN WET CONDITIONS**
- ✓ **EASY TO HANDLE & TRANSPORT**
due to honeycomb core
- ✓ **100% WATERPROOF PVC PANEL**
no wood used in manufacture
- ✓ **HYGIENIC WIPE CLEAN SURFACE**
- ✓ **MOULD RESISTANT**
- ✓ **EXCELLENT INSULATION & SOUND PROOFING**
- ✓ **CLASS 1 FIRE RATED (BS 476 Part 7)**
- ✓ **STYLISH & PRACTICAL**
- ✓ **COST-EFFECTIVE**
- ✓ **TRANSFORM YOUR BATHROOM IN HOURS RATHER THAN DAYS**

M1 SERIES PVC SHOWER PANELS

The clever alternative to tiling and perfect solution for an economical wall covering.

M1 Panels are quick to install, easy to keep clean and are suitable for domestic and commercial applications.



**TONGUE
& GROOVE**



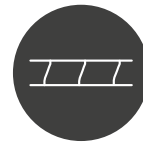
**100%
WATERPROOF**



**FLAME
RETARDANT**



**EASY
CLEAN**



**HONEYCOMB
CORE**



**EASY
INSTALL**

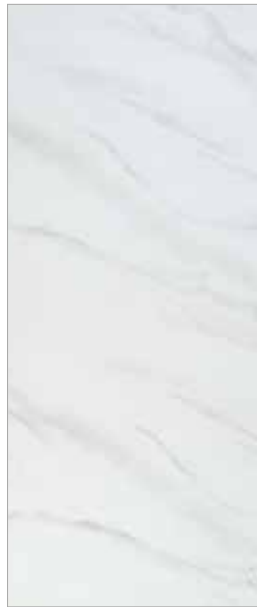


PRODUCT RANGE - MARBLE

size: 1000 x 2400 x 10mm



Grey Marble Matt
PP51-2410-7D



White Marble
PP51-2410-35



Grey Marble Gloss
PP51-2410-31



Pergamon Marble
PP51-2410-32



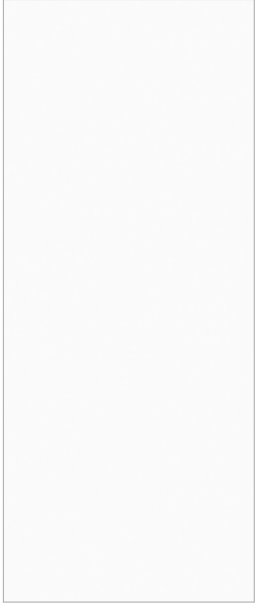
Travertine Beige
PP51-2410-34



Black Marble
PP51-2410-30

PRODUCT RANGE - WHITE & STONE

size: 1000 x 2400 x 10mm



White Gloss
PP51-2410-1



White Granite
PP51-2410-38



White Terrazzo
PP51-2410-7A



Grey Terrazzo
PP51-2410-7B



White Arctic
PP51-2410-72



Matt Linear
PP51-2410-7E



Ledgestone
PP51-2410-7F

PRODUCT RANGE - DESIGNER

size: 1000 x 2400 x 10mm



Silver Retro Metallic
PP51-2410-36



Rustic Oak
PP51-2410-3A



Matt Slate
PP51-2410-7C

PRODUCT RANGE - CONCRETE

size: 1000 x 2400 x 10mm



Grey Concrete
PP51-2410-3C



Beige Concrete
PP51-2410-3D



ACCESSORIES - FINISHING TRIMS

Individual trim length: 2400mm



EDGE PROFILE

Satin Aluminium

PP10-2405-03

White PVC

PP10-2405-10



STRAIGHT JOINT

Satin Aluminium

PP10-2410-03

White PVC

PP10-2410-10



EXTERNAL CORNER

Satin Aluminium

PP10-2420-03

White PVC

PP10-2420-10



INTERNAL CORNER

Satin Aluminium

PP10-2415-03

White PVC

PP10-2415-10

ACCESSORIES - INSTALLATION KIT



Panel Fitting Kit
up to 2 panels

PPFK-0002-00



Panel Fitting Kit
up to 3 panels

PPFK-0003-00





SPC Vinyl Flooring



100% WATERPROOF



CLICK SYSTEM



EASY INSTALL



SOUND ABSORBING



FLAME RETARDANT



EASY CLEAN

SPECIFICATION AND FEATURES

SPC FLOORING VS HARDWOOD LAMINATE FLOORING

- Excellent fire retardant, unique construction, more rigid and stable
- Superior weather resistant, 100% waterproof
- Highgrade anti-abrasion, high-strength, damp-proof
- Superior anti-slipping, anti-mildew, and anti-bacterial
- Sound absorption, room noise can be effectively decreased
- Easy installation, low maintenance, less labour cost

SPC FLOORING VS CARPET

- More durable, patented wear layer technology improves product life
- Fire retardant, anti-moisture, waterproof
- Low maintenance, less cleaning
- Anti-bacterial, anti-mildew

SPC FLOORING VS TILE

- Less weight, faster installation, less material and labour cost
- Excellent resilience, better warm underfoot
- Anti-slip, anti-abrasion, better sound absorption



100%
WATERPROOF



CLICK
SYSTEM



BOARD
THICKNESS



SOUND
ABSORBING



FLAME
RETARDANT



EASY
CLEAN



EASY
INSTALL



WARRANTY





PLANKS

Our luxury planks range offers the authentic appearance of wood with the practicality of vinyl making them ideal for bathrooms. Extremely durable, waterproof and with built-in underlay, available in a wide range of shades to suit all installations.



TILES

Our stunning tiles range is the perfect alternative to real stone and ceramic tiles and offers the look of a traditional tiled floor that is warm underfoot, waterproof, and easy to clean and maintain. Available in a range of sizes and designs to suit all installations.



PRODUCT RANGE - GREY WOOD

size: 1183 x 1220 x 6mm

Specification:

- Uniclic® Click System
- 5.0mm Thick + 1.0mm IXPE Underlay
- Pack Quantity - 10
- Area/Pack - 2.23m²
- Wear Layer - 0.55mm



Light Grey Oak - Pack Code = **SPCP-0010** (10pcs)



Dark Grey Rustic - Pack Code = **SPCP-0012** (10pcs)

PRODUCT RANGE - NATURAL WOOD

size: 1183 x 1220 x 6mm



Vermont Oak - Pack Code = **SPCP-0002** (10pcs)



Natural Oak - Pack Code = **SPCP-0004** (10pcs)



Rustic Oak - Pack Code = **SPCP-0006** (10pcs)



Limed Oak - Pack Code = **SPCP-0008** (10pcs)

PRODUCT RANGE - TILE

size: 305 x 610 x 6mm

Specification:

- Uniclic® Click System
- 5.0mm Thick + 1.0mm IXPE Underlay
- Pack Quantity - 10
- Area/Pack - 1.86m²
- Wear Layer - 0.55mm



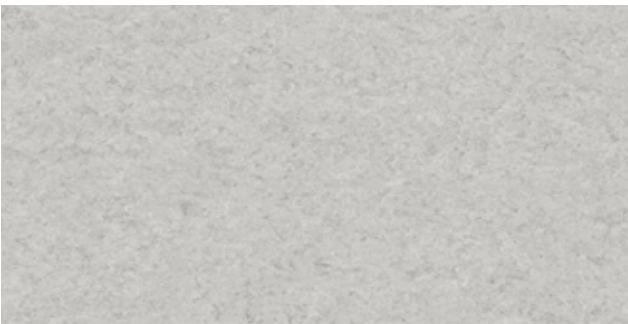
Light Sandstone

Pack Code = **SPCT-0004** (10pcs)



Dark Grey Slate

Pack Code = **SPCT-0002** (10pcs)



Stone Grey

Pack Code = **SPCT-0008** (10pcs)



Carrera Marble Matt

Pack Code = **SPCT-0006** (10pcs)

SPC VINYL FLOORING INSTALL KIT

MCTO-SPC-0005

- 1 flooring pull bar
- 1 tapping block
- 1 installation hammer (30mm)
- 30 spacers



Uniclic® Installation
Technology





